

# WATER ADVISORY

**This water may contain blue-green algae that can be harmful to humans and pets.**

To reduce the risk of illness:

- Do not swim, waterski, or tube if the water looks like spilled green paint or pea soup
- Avoid swallowing water and watch small children and pets who may ingest water
- Rinse off with clean water after swimming
- Stay away from areas of scum when boating
- Contact your healthcare provider or veterinarian if you or your pet become sick after swimming.



**For more information call the ND Dept. of Health at 701-328-5210 or the Upper Missouri District Health Unit at 701-774-6400.**



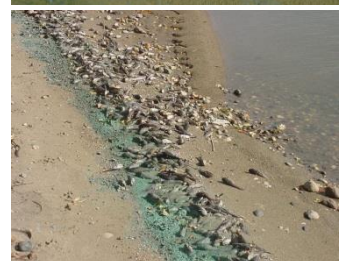
**NORTH DAKOTA**  
DEPARTMENT *of* HEALTH

# WATER ADVISORY

**This water may contain blue-green algae that can be harmful to humans and pets.**

To reduce the risk of illness:

- Do not swim, waterski, or tube if the water looks like spilled green paint or pea soup
- Avoid swallowing water and watch small children and pets who may ingest water
- Rinse off with clean water after swimming
- Stay away from areas of scum when boating



Insert your logo

Contact your healthcare provider or veterinarian if you or your pet become sick after swimming.

**For more information call: xxx-xxx-xxxx**